



# MORHAM MAINE'S



## MAINE-ANJOU BEEF STUD



Brooke Morham with Rouge Juliet

**2018  
EDITION**



## STUD & COMMERCIAL SALES

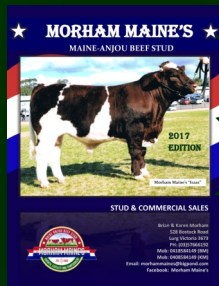
Brian & Karen Morham  
528 Bostock Road  
Lurg Victoria 3673  
PH: (03)57666192

Mob: 0418584149 (BM)

Mob: 0408584149 (KM)

Email: [morhammaines@bigpond.com](mailto:morhammaines@bigpond.com)

Facebook: Morham Maine's



# MORHAM MAINE'S MAINE ANJOU BEEF STUD

## THE FULL BLOOD & PURE BREAD STORY CONTINUES

Brian and I left you last issue with the news of our family and studs relocation to Lurg in Victoria and a few words on the beginnings of our dream to build a herd of **FULL BLOOD** Maine Anjou's.

In 2017 we joined the "Maine Anjou Society Ltd" and with their help and support we have transferred much of our herd on to the ABRI Data Base, we have registered with Breed Plan and have now DNA profiled all our "ROUGE" Full French Maine Anjou lines, this facilitates our passion and commitment for the breed as well as promoting our studs achievements to other Maine Anjou Societies and studs around the world.

Our Full Blood breeding program is now in full swing with all of our 2014(1<sup>st</sup>) and 2015(2<sup>nd</sup>) embryo females due to calve to full blood bulls this season and we excitedly await the arrival of their progeny.

"Rouge Fleur" our most successful show female will be taking a break from the show circuit until later this year when we hope she will return to the spring shows as a cow with a lovely full blood calf at foot sired by Rouge Pascal.

In the meantime up and coming full bloods Heifers Rouge Juliet, Rouge Abella and young bull Rouge Pierre all from our 2016 embryo program will step up to the show platform. Rouge Juliet is already making her mark winning Junior Interbreed Heifer at the 2017 Benalla Show. I am really impressed with Rouge Juliet she is a heifer that is showing huge potential.

Our French full blood line of Maine bulls including our most successful 2017 show champion bull "Rouge Napoleon" have been busy working out in the paddocks keeping all our girls happy.

The full blood bulls are adding impressive qualities to our Australian Pure-Bred Maine's, achieving our goals of a rich roan colour, thickness, and structure.

This calving season we have seen smaller birth weight calves that have grown fast and muscled well with a much stronger consistent coat colour and patterning. I love the lush rich dark roan coat colour with classic white tail and leg markings that our French sires are giving their calves.

This April will see our 2 "Kanga Revival" Embryo calves come home to Lurg.

Kanga Revival is long gone but he is a renowned Bull in the history of Australian Maine Anjou Breeding and the success of the 2 embryos will bring some of the Revival magic into our herd for blending with our newer genetic lines.

In March 2018 we will anxiously and excitedly be awaiting the arrival of 3 Epinal sired embryo calves " another sire of historical interest and 3 **VERY SPECIAL** "Solid Black" Maine Anjou embryo calves from Sire Polled Pursuit.

If all goes well the Polled Pursuit calves will be the foundation of our all black Maine Anjou herd a variation away from our traditional red and white the all Black Maine is growing in popularity and is not yet well represented here in Australia.

Brian and I have worked hard on developing and improving our stud cattle over the years focusing strongly on, new genetic lines, consistency in the form, structure, colouring, temperament, size and overall evenness of our stud cattle, this all takes time and involves some tough decisions.

On the 6th of February 2018 we are putting all our hard work to the test we will again be participating in Day 9 of the Stock and Land Beef Week and this year for the first time, a pen of Ten 2016 Maine Anjou Heifers have been entered into the Future Breeder Beef Week Heifer Challenge.

On display will be our pen of future breeders, along with cows, calves and bulls, it promises to be an exciting event for our stud.

You can also meet Brian, myself, the kids and the cattle of Morham Maine's at the 2018 at Canberra Royal Show, Sydney Royal Show, Melbourne Royal Show, Benalla Show and at 2018 "Farm World" event in Lardner Park Victoria in April.

Brian and I love showing off our Maine Anjou's cattle and always welcome on farm visits. you can follow the latest news of the farm on Facebook or google #morhammaines to link to the page, alternatively we welcome you to contact us at any time.


Love the farmer chic  
Karen Morham



**"We won't sell anything we wouldn't buy"**



## WHY CHOOSE A MAINE-ANJOU

- Easy calving
- Docility and temperament
- High fertility
- Maternal instincts
- Milk production
- Polled, Scurred and Horned  or
- Red/white, red or black col-
- Genetic length traits
- Genetic depth traits
- Traditional large tall Framed animals, Maine's are also available in medium and smaller frame sizes.
- A Maine cow can average between 600kg-800kg
- A Maine Bull can average between 1000kg- 1200kg



Photos courtesy of B Childs

## THE UNSPOKEN TRUTH ABOUT CROSS BREEDING WITH A MAINE-ANJOU

*Fast growth, excellent conversion of available feed and greater muscle yielding capacity are just a few of the financial benefits underpinning the foundation of Maine Anjou breed.*

*Making Maine Anjou's an excellent choice as a "Terminal Sire" in a commercial 1st cross beef production business.*

*This foundation allows commercial breeders to gain a financial advantage at the sale yards and over the hooks with Weaner Vealers achieving weights of 350kg -395kg at 8-9mths and 12mth yearlings weighting between 420kg -520kg on average.*

*The fast weight gain of the 1st cross Maine Anjou calf gives more kilos at an earlier turn off age resulting in more profit for the commercial producer.*

*Morham Maine's and our commercial beef herd clients are achieving these results and gaining this added weight advantage on grass fed pasture as part of their commercial heard management program.*

*Commercial beef producers using Maine Anjou beef bulls as terminal sires over other breeds are producing a weighty, early turn off 1st cross calf that retains the same colour, patterning and appearance as that of the dam cow. (see photos below 1st cross calves sire by Morham Maine's Andy out of Simmental, Brahman and Black baldly cows)*

*Commercial Black Angus Beef producers that introduce Red/White Maine Anjou bulls to their herd adds faster calf growth and heavier calf weights to weaners whilst still producing a black Angus looking calf.*

*This occurs due to the dominant black colour gene of the cow influencing the coat colour of the offspring over the recessive red colour gene and weaker patterning of the Maine Anjou terminal sire. This colour and coat result is achieved with other breeds with similar dominant colour and pattern genetics such as Herefords.*

*This phenomenon has been taken advantage of by commercial Hereford beef producers who by using Maine's over Herefords for all the above financial benefits have with out sacrificing the distinctive white backline of the Hereford colour patterning brought to the 1st cross of the breed the addition of a red pigmentation around the eye socket from the Maine Anjou's. This trait is aiding in reduction of contracting eye cancer.*

*Historically Maine's are known as dual purpose breed (both beef and or Dairy cattle) Maines are renowned for their excellent maternal instincts, ease of calving when matched responsibly with suitable heifers and cows, good performing udders and great milking ability.*

*Therefor should a beef producer choose to retain a few herd replacement 1st cross heifers they will then pass on that mothering and milking trait into the commercial herd.*

*A 1st cross heifer or cow with a mixed colour already in her genetic make up may throw a 2nd cross black/white or red/white combination calf as the strength of the dominant colour will not be as prominent with a 2nd crossing however the calf growth and weight for age gain will remain as profitable as any of the 1st cross if not even further improved by milk quality.*

*The poll variety of the Maine Anjou can assist in the elimination of horns reducing the need to de-horn a commercial herd.*

*Lastly the temperament of a Morham Maine's Maine Anjou Bull is second to none.*

*The Maine Anjou Breed is famous for the its quite temperament and calm nature it is a breed that can make cattle management and yard handling safer Morham Maine's are dedicated to retaining this important genetic trait in all their cattle.*



Maine Anjou x Pure Brahman



Simbrah x Maine Anjou



Simbrah x Maine Anjou

**"We won't sell anything we wouldn't buy"**



# RESULTS AND HIGHLIGHTS OF 2017 SHOW CIRCUIT, EXPO'S AND STUD FEATURES

## STOCK AND LAND BEEF WEEK

2/2/2017



Stock and Land Beef Week. Morham Maines opened up the farm for viewing and provides a great opportunity for anyone interested in the Maine Anjou breed to meet and greet. Beef Week provides an avenue to showcase stud stock and potential sales.



## CANBERRA SHOW

24/2/17-26/2/17

- Junior champion Bull: Morham Maine's Rouge Napoleon
- Junior champion Heifer: Morham Maine's Rouge Fleur



## SYDNEY SHOW

2/4/17-12/4/17



- Junior Reserve Champion Heifer : Morham Maine's Rouge Fleur
- Junior Reserve Champion Bull: Morham Maine's Rouge Napoleon



## BENALLA SHOW

21/10/17

- Champion All Breed Heifer: Morham Maine's Rouge Juliet.
- Junior Champion Female: Morham Maine's Rouge Juliet
- Grand Champion Female: Morham Maine's Rouge Juliet
- Reserve Champion Bull: Morham Maine's Rouge Romeo
- Reserve Champion Female: Morham Maine's Rouge Fleur



## ROYAL MELBOURNE SHOW

30/9/17-6/10/17



- Junior Champion Heifer: Morham Maine's Rouge Juliet
- Reserve Senior Champion Cow or Heifer: Morham Maine's Fleur
- Winner of Junior Pair under 20 mths



## TOOWOOMBA BEEF EXPO QLD

30/8/17-1/9/17

opportunity to promote Maine Anjou cattle to our Northern regions. Very Successful event with much interest in what the breed has to offer.







# GALLERY



Rouge Romeo



Rouge Pierre



Rouge Mariette



Rouge Juliet



Rouge Abella



O'Hara



Levity



Jenna

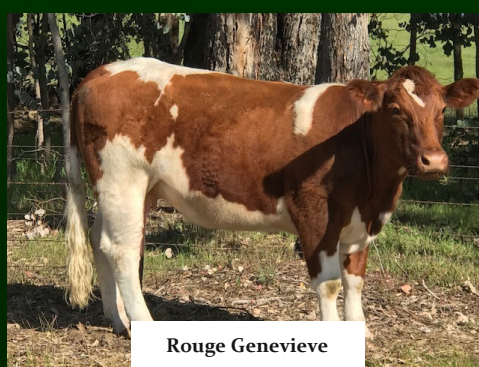
JENNA



Rouge Napoleon



Rouge Antoinette



Rouge Genevieve



Rouge Valentina





# 2017 SHOW GALLERY



Rouge Fleur  
Canberra Show



Rouge Napoleon  
Canberra Show



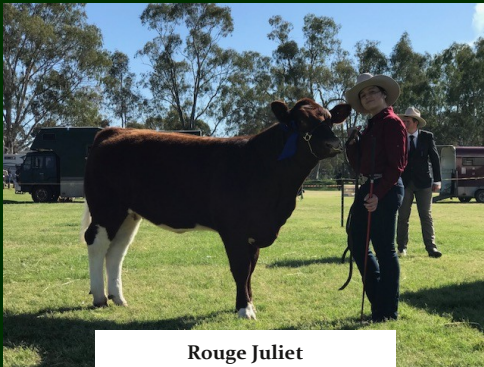
Rouge Juliet  
Benalla Show



Jimmy  
Canberra Show



Rouge Fleur  
Sydney Royal Show



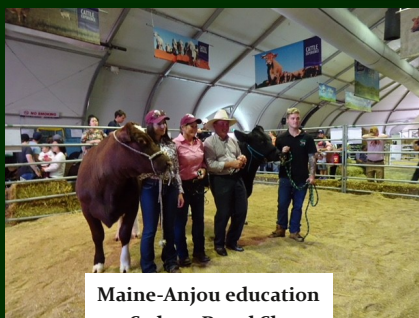
Rouge Juliet  
Benalla Show



Rouge Napoleon  
Sydney Royal Show



Rouge Fleur  
Canberra Show



Maine-Anjou education  
at Sydney Royal Show



Maine-Anjou Stud Breeders  
Canberra Show



# BULLS AND SEMEN FOR SALE



## MORHAM MAINE'S ROUGE MARCEL



DATE ISSUED: 16/01/17  
ISSUE NO: 8411

**MAINE-ANJOU SOCIETY LTD**  
(Herein referred to as MASL)

**REGISTRATION CERTIFICATE**

This is to certify the pedigree of

**NAME:** MORHAM MAINE'S ROUGE MARCEL  
**SEX:** MALE **GRADE:** FULLF **BIRTH DATE:** 30/09/14 **HORN:** P  
**DNA Case#:** 563758

**TATTOO:** M0 F K 005 ET  
**COLOUR:** RW

**BIBI 9TH**

COCA COLA ATOTIE MUMUMUMU  
SIRE: MARIHAMM TAIPON 33H MARIHAMM FOLLED LEADER 88 MUMUMUMU  
MARIHAMM MISS SHANTA 21F MARIHAMM MISS SANDY 1C MUMUMUMU  
MUMUMUMU

VOLTIGEUR 4 MUMUMUMU  
DIAGNOSTIC 41 FB URGENCE F14 MUMUMUMU  
DAM: MISS GEE BAR 112L MR AMBER 6D MUMUMUMU  
MISS GEE BAR 621F MUMUMUMU  
MISS GEE BAR 122K MUMUMUMU

**BREEDER:** BRIAN & KAREN MORHAM  
528 BOSTOCK ROAD  
LURG  
VIC 3673

NO ALTERATIONS MAY BE MADE TO THIS CERTIFICATE WITHOUT OFFICIAL ENDORSEMENT BY MASL.  
The animal has been accepted for issue of this certificate by MASL in accordance with its Regulations in force at the date of issue of this Certificate and is subject to correction or cancellation under the rules and regulations of MASL. If this animal is sold the transfer fee and this certificate must be sent to MASL together with completed Transfer Information requested on the reverse side of this Certificate within 7 days from date of sale.



## MORHAM MAINE'S ROUGE PASCAL



DATE ISSUED: 12/01/17  
ISSUE NO: 8412

**MAINE-ANJOU SOCIETY LTD**  
(Herein referred to as MASL)

**REGISTRATION CERTIFICATE**

This is to certify the pedigree of

**NAME:** MORHAM MAINE'S ROUGE PASCAL  
**SEX:** MALE **GRADE:** FULLF **BIRTH DATE:** 26/09/14 **HORN:** P  
**DNA Case#:** 563759

**TATTOO:** M0 F K 003 ET  
**COLOUR:** RW

**BIBI 9TH**

COCA COLA ATOTIE MUMUMUMU  
SIRE: MARIHAMM TAIPON 33H MARIHAMM FOLLED LEADER 88 MUMUMUMU  
MARIHAMM MISS SHANTA 21F MARIHAMM MISS SANDY 1C MUMUMUMU  
MUMUMUMU

VOLTIGEUR 4 MUMUMUMU  
DIAGNOSTIC 41 FB URGENCE F14 MUMUMUMU  
DAM: MISS GEE BAR 112L MR AMBER 6D MUMUMUMU  
MISS GEE BAR 621F MUMUMUMU  
MISS GEE BAR 122K MUMUMUMU

**BREEDER:** BRIAN & KAREN MORHAM  
528 BOSTOCK ROAD  
LURG  
VIC 3673

NO ALTERATIONS MAY BE MADE TO THIS CERTIFICATE WITHOUT OFFICIAL ENDORSEMENT BY MASL.  
The animal has been accepted for issue of this certificate by MASL in accordance with its Regulations in force at the date of issue of this Certificate and is subject to correction or cancellation under the rules and regulations of MASL. If this animal is sold the transfer fee and this certificate must be sent to MASL together with completed Transfer Information requested on the reverse side of this Certificate within 7 days from date of sale.



# BULLS AND SEMEN FOR SALE



## MORHAM MAINE'S ROUGE NAPOLEON



**MAINE-ANJOU SOCIETY LTD**  
(Herein referred to as MASL)

DATE ISSUED: 12/01/17  
ISSUE NO: 8420

**REGISTRATION CERTIFICATE**

This is to certify the pedigree of

**NAME:** MORHAM MAINE'S ROUGE NAPOLEON  
**SEX:** MALE **GRADE:** FULLF **BIRTH DATE:** 26/08/15 **HORN:** P **TATTOO:** MM F L 002 **ET**  
**DNA Case#:** 563763 **COLOR:** BK

**SIRE:** MANITOU'S POLLED PATRIOT  
MR TRIER 1 1002  
MANITOU'S WRANGLER  
MANITOU MS 38M  
GEE BAR LINER 334N  
MISS GEE BAR 849J  
MISS GEE BAR 669F

**DAM:** MISS GEE BAR 906J  
MR AMBER  
GEE BAR POLLED SUPER DUEE 710G IMC P G0710  
MISS GEE BAR 310C  
KFC TITAN 7Y  
MISS GEE BAR 426D  
MISS GEE BAR 51Z

**BREEDER:** BRIAN & KAREN MORHAM  
528 BOSTOCK ROAD  
LURG  
VIC 3673

NO ALTERATIONS MAY BE MADE TO THIS CERTIFICATE WITHOUT OFFICIAL ENDORSEMENT BY MASL.  
The animal has been accepted for issue of this certificate by MASL in accordance with its Regulations in force at the date of issue of this Certificate and is subject to correction or cancellation under the rules and regulations of MASL. If this animal is sold the transfer fee and this certificate must be sent to MASL together with completed Transfer information requested on the reverse side of this Certificate within 7 days from date of sale.



## MORHAM MAINE'S ROUGE BASILE



**MAINE-ANJOU SOCIETY LTD**  
(Herein referred to as MASL)

DATE ISSUED: 12/01/17  
ISSUE NO: 8417

**REGISTRATION CERTIFICATE**

This is to certify the pedigree of

**NAME:** MORHAM MAINE'S ROUGE BASILE  
**SEX:** MALE **GRADE:** FULLF **BIRTH DATE:** 29/08/15 **HORN:** P **TATTOO:** MM F L 006 **ET**  
**DNA Case#:** 563764 **COLOR:** BK

**SIRE:** MANITOU'S POLLED PATRIOT  
MR TRIER 1 1002  
MANITOU'S WRANGLER  
MANITOU MS 38M  
GEE BAR LINER 334N  
MISS GEE BAR 849J  
MISS GEE BAR 669F

**DAM:** MISS GEE BAR 906J  
MR AMBER  
GEE BAR POLLED SUPER DUEE 710G IMC P G0710  
MISS GEE BAR 310C  
KFC TITAN 7Y  
MISS GEE BAR 426D  
MISS GEE BAR 51Z

**BREEDER:** BRIAN & KAREN MORHAM  
528 BOSTOCK ROAD  
LURG  
VIC 3673

NO ALTERATIONS MAY BE MADE TO THIS CERTIFICATE WITHOUT OFFICIAL ENDORSEMENT BY MASL.  
The animal has been accepted for issue of this certificate by MASL in accordance with its Regulations in force at the date of issue of this Certificate and is subject to correction or cancellation under the rules and regulations of MASL. If this animal is sold the transfer fee and this certificate must be sent to MASL together with completed Transfer information requested on the reverse side of this Certificate within 7 days from date of sale.



## MORHAM MAINE'S ROUGE MICHEL



**MAINE-ANJOU SOCIETY LTD**  
(Herein referred to as MASL)

DATE ISSUED: 12/01/17  
ISSUE NO: 8418

**REGISTRATION CERTIFICATE**

This is to certify the pedigree of

**NAME:** MORHAM MAINE'S ROUGE MICHEL  
**SEX:** MALE **GRADE:** FULLF **BIRTH DATE:** 27/08/15 **HORN:** P **TATTOO:** MM F L 003 **ET**  
**DNA Case#:** 563765 **COLOR:** BK

**SIRE:** MANITOU'S POLLED PATRIOT  
MR TRIER 1 1002  
MANITOU'S WRANGLER  
MANITOU MS 38M  
GEE BAR LINER 334N  
MISS GEE BAR 849J  
MISS GEE BAR 669F

**DAM:** MISS GEE BAR 906J  
MR AMBER  
GEE BAR POLLED SUPER DUEE 710G IMC P G0710  
MISS GEE BAR 310C  
KFC TITAN 7Y  
MISS GEE BAR 426D  
MISS GEE BAR 51Z

**BREEDER:** BRIAN & KAREN MORHAM  
528 BOSTOCK ROAD  
LURG  
VIC 3673

NO ALTERATIONS MAY BE MADE TO THIS CERTIFICATE WITHOUT OFFICIAL ENDORSEMENT BY MASL.  
The animal has been accepted for issue of this certificate by MASL in accordance with its Regulations in force at the date of issue of this Certificate and is subject to correction or cancellation under the rules and regulations of MASL. If this animal is sold the transfer fee and this certificate must be sent to MASL together with completed Transfer information requested on the reverse side of this Certificate within 7 days from date of sale.




# BULLS AND SEMEN FOR SALE



## MORHAM MAINE'S ROUGE PIERRE



 MAINE-ANJOU SOCIETY LTD  
(Herein referred to as MASL)

DATE ISSUED: 09/06/17  
ISSUE NO: 8438

REGISTRATION CERTIFICATE

This is to certify the pedigree of

**NAME:** MORHAM MAINE'S ROUGE PIERRE  
**SEX:** MALE  
**GRADE:** FULLF  
**DNA Case#:** uq8595619

**TATTOO:** MM F C 007 ET  
**COLOUR:** RW

**SIRE:** LOULOU IMC X G0772  
UPON  
AFFALE 4467130021  
RAFALE

**DAM:** MISS GEE BAR 82024 IMC X T0765  
MANITOU S YUKON 663A  
MANITOU MS YUKON LOCK 1044A  
MANITOU JASMINE 753A

**BREEDER:** BRIAN & KAREN MORHAM  
528 BOSTOCK ROAD  
LURG  
VIC 3673

**ANCESTRY:**


TIMON 28712	MUMUMUMU
ABRICOT 29518	H MUMUMUMU
RAPIDE 78779	MUMUMUMU
GEE BAR LINER 501L	MUMUMUMU
GEE BAR LINER 334N	MUMUMUMU
MISS GEE BAR 448D	MUMUMUMU
MISS GEE BAR 82024 IMC X T0765	P MUMUMU
MANITOU S YUKON 663A	MUMUMUMU
MANITOU MS YUKON LOCK 1044A	P MUMUMU
MANITOU JASMINE 753A	H MUMUMU

NO ALTERATIONS MAY BE MADE TO THIS CERTIFICATE WITHOUT OFFICIAL ENDORSEMENT BY MASL.  
The animal has been accepted for issue of this certificate by MASL in accordance with its Regulations in force at the date of issue of this Certificate and is subject to correction or cancellation under the rules and regulations of MASL. If this animal is sold the transfer fee and this certificate must be sent to MASL together with completed Transfer information requested on the reverse side of this Certificate within 7 days from date of sale.



## MORHAM MAINE'S ROUGE ROMEO



 MAINE-ANJOU SOCIETY LTD  
(Herein referred to as MASL)

DATE ISSUED: 09/06/17  
ISSUE NO: 8433

REGISTRATION CERTIFICATE

This is to certify the pedigree of

**NAME:** MORHAM MAINE'S ROUGE ROMEO  
**SEX:** MALE  
**GRADE:** FULLF  
**DNA Case#:** uq8595618

**TATTOO:** MM F C 001 ET  
**COLOUR:** RW

**SIRE:** LOULOU IMC X G0772  
UPON  
AFFALE 4467130021  
RAFALE

**DAM:** MISS GEE BAR 82024 IMC X T0765  
MANITOU S YUKON 663A  
MANITOU MS YUKON LOCK 1044A  
MANITOU JASMINE 753A

**BREEDER:** BRIAN & KAREN MORHAM  
528 BOSTOCK ROAD  
LURG  
VIC 3673

**ANCESTRY:**

TIMON 28712	MUMUMUMU
ABRICOT 29518	H MUMUMUMU
RAPIDE 78779	MUMUMUMU
GEE BAR LINER 501L	MUMUMUMU
GEE BAR LINER 334N	MUMUMUMU
MISS GEE BAR 448D	MUMUMUMU
MISS GEE BAR 82024 IMC X T0765	P MUMUMU
MANITOU S YUKON 663A	MUMUMUMU
MANITOU MS YUKON LOCK 1044A	P MUMUMU
MANITOU JASMINE 753A	H MUMUMU

NO ALTERATIONS MAY BE MADE TO THIS CERTIFICATE WITHOUT OFFICIAL ENDORSEMENT BY MASL.  
The animal has been accepted for issue of this certificate by MASL in accordance with its Regulations in force at the date of issue of this Certificate and is subject to correction or cancellation under the rules and regulations of MASL. If this animal is sold the transfer fee and this certificate must be sent to MASL together with completed Transfer information requested on the reverse side of this Certificate within 7 days from date of sale.



# BULLS AND SEMEN FOR SALE



## MORHAM MAINE'S ARCHIE



**MAINE-ANJOU SOCIETY LTD**  
(Herein referred to as MASL)

DATE ISSUED: 07/02/17  
ISSUE NO: 8427

**REGISTRATION CERTIFICATE**

This is to certify the pedigree of: **NAME: MORHAM MAINE'S ARCHIE**  
SEX: MALE GRADE: PURE BIRTH DATE: 05/03/16 HORN: P TATTOO: MM P C 001  
COLOUR: RH

PARISIAN 519124414  
MVH REVIVAL 5383122118 JFA F R2118 MUMUMUMU  
OVICCI 537812428 MUMUMUMU  
SIRE: ASHGARTH FARMS LISAMAN AFB B W0011 MUMUMUMU  
MAINE-PARK BILL H MUMUMUMU  
WATTLE GLEN LISA B WG P L0005 H MUMUMUMU  
WATTLE GLEN LISA 1 H MUMUMUMU

MR AMBER MUMUMUMU  
GEE BAR FOLDED SUPER DUDE 7100 IMC F G0710 P MUMUMUMU  
MISS GEE BAR 310C MUMUMUMU  
DAM: ASHGARTH FARMS JAMINE 2ND APF P R0028 P MUMUMUMU  
MAINE-PARK SAM H MUMUMUMU  
WATTLE GLEN JAN WG P K0003 H MUMUMUMU  
WATTLE GLEN JENNY 3RD H MUMUMUMU

BREEDER: BRIAN & KAREN MORHAM  
528 BOSTOCK ROAD  
LURG  
VIC 3673

NO ALTERATIONS MAY BE MADE TO THIS CERTIFICATE WITHOUT OFFICIAL ENDORSEMENT BY MASL.  
The animal has been accepted for issue of this certificate by MASL in accordance with its Regulations in force at the date of issue of this Certificate and is subject to correction or cancellation under the rules and regulations of MASL. If this animal is sold the transfer fee and this certificate must be sent to MASL together with completed Transfer information requested on the reverse side of this Certificate within 7 days from date of sale.



## MORHAM MAINE'S JIMMY



**SEMEN AVAILABLE ONLY**

**CERTIFICATE OF REGISTRATION**  
- MAINE-ANJOU BEEF AUSTRALIA LTD -

NAME: MORHAM MAINE'S JIMMY TATTOO: MM P L689  
REG. NUMBER: 10612 SEX: Male DOB: 22-Jul-2015  
COLOUR: Red and White GRADE: Pure HORN: S

Parisian 537812444  
MVH Revival 5383122118 JFA F 1656  
Ovicci 537812428  
SIRE: Ashgarth Farms Lisaman 7770  
Maine-Park Bill MP P H0015  
Wattle Glen Lisa B 7297  
Wattle Glen Lisa B WG C C0007  
Wattle Glen Lisa B WG C C0007  
LEADERS IN FEED EFFICIENCY  
Mr Amber 6D (Canada) 40416 FBP  
Gee Bar Polled Super Dude 7100 310064  
Miss GEE BAR 310C 310C  
DAM: Ashgarth Farms Imogen (A) 10178  
MVH Revival 5383122118 JFA F 1656  
Ashgarth Farms Ilyah 7768  
Wattle Glen Lisa 9th 7492

Breeder: B & K Morham [123]  
Registration: 19/11/2015  
Thursday, 19 November 2015

Owner: [123]  
B & K Morham  
528 Bostock Road  
LURG VIC 3673  
Registrar: *RBC*

ACN 128 471 618  
P.O. Box 1053, BENDIGO, VICTORIA, 3552.



## MORHAM MAINE'S JASPER



**SEMEN AVAILABLE ONLY**

**CERTIFICATE OF REGISTRATION**  
- MAINE-ANJOU BEEF AUSTRALIA LTD -

NAME: MORHAM MAINE'S JASPER TATTOO: MM P K053  
REG. NUMBER: 10542 SEX: Male DOB: 24-Jul-2014  
COLOUR: Red and White GRADE: Pure HORN: H

Parisian 537812444  
MVH Revival 5383122118 JFA F 1656  
Ovicci 537812428  
SIRE: Ashgarth Farms Lisaman 7770  
Maine-Park Bill MP P H0015  
Wattle Glen Lisa B 7297  
Wattle Glen Lisa B WG C C0007  
Wattle Glen Lisa B WG C C0007  
LEADERS IN FEED EFFICIENCY  
Kanga D'Alton D F P0500  
Maine-Park Bill MP P H0015  
North River Zantho 6431  
DAM: Wattle Glen Lisa 9th 7492  
Maine-Park Jase MP F A0002  
Wattle Glen Lisa 2 WG C C0008  
Wattle Glen Jean 2 WG B A0005

Breeder: B & K Morham [123]  
Registration: 13/4/2015  
Monday, 13 April 2015

Owner: [123]  
B & K Morham  
"Aniloon"  
73 Brookmans Rd  
FINLEY NSW 2713  
Registrar: *RBC*

ACN 128 471 618  
P.O. Box 1053, BENDIGO, VICTORIA, 3552.



# BULLS AND SEMEN FOR SALE



## MORHAM MAINE'S MATT



SEMEN  
AVAILABLE  
ONLY

**CERTIFICATE OF REGISTRATION**  
- MAINE-ANJOU BEEF AUSTRALIA LTD -

NAME: MORHAM MAINE'S MATT  
REG. NUMBER: 10519  
COLOUR: Red and White

SEX: Male  
GRADE: Pure

TATTOO: MM P K064  
DOB: 15-Sep-2014  
HORN: P

Vuonmont Pierre Jao P K 001 7084  
Maine Park Monkey-Man 7720  
Maine Park Yessie 7530

SIRE: Wattle Glen Troy 10130  
Maine Park Paul MP P J0002  
Wattle Glen Wendy 2nd 7494  
Wattle Glen Silver 1st WSD C0005  
Mr Amber 6D  
Gee Bar PLD SPR Dude710G 310884  
Miss Gee Bar 310C 310C

DAM: Ashgarth Farms Janine 10135  
Maine Park Slim MP P H0012  
Wattle Glen Jan 7215  
Wattle Glen Jerry 3rd 6649

Breeder: B & K Morham [123]  
Registration: 10/3/2015  
Tuesday, 10 March 2015

Owner: [123]  
B & K Morham  
"Arakoon"  
73 Broughams Rd  
FINLEY NSW 2713

Registrar: *RLB*

ACN 128 471 616  
P.O. Box 1053, BENDIGO, VICTORIA, 3552



## MORHAM MAINE'S LEROY



SEMEN  
AVAILABLE  
ONLY

**CERTIFICATE OF REGISTRATION**  
- MAINE-ANJOU BEEF AUSTRALIA LTD -

NAME: MORHAM MAINE'S LEROY  
REG. NUMBER: 10339  
COLOUR: Red and White

SEX: Male  
GRADE: Pure

TATTOO: MM P H016  
DOB: 25-Mar-2012  
HORN: P

Tulkewhan Lad 51P  
Mr Twin Valley 30U 154246  
Ms Twin Valley Elle 150N

SIRE: Chalton Easy Beat (A) 10205  
SDR Aspens Reagin P14039 IJA P R0315  
Chalton Alora CMB P H0028  
Lake Peardon Allora ADS P AD026  
Mr Amber 6D  
Gee Bar PLD SPR Dude710G 310884  
Miss Gee Bar 310C

DAM: Ashgarth Farms Lillian 10131  
Vuonmont Pierre Jao P K 001 7094  
Ashgarth Farms Lily 7715  
Wattle Glen Lisa B 7297

Breeder: B & K Morham [123]  
Registration: 7/5/2012  
Monday, 7 May 2012

Owner: [123]  
B & K Morham  
"Arakoon"  
Broughams Rd  
FINLEY NSW 2713

Registrar: *RLB*

ACN 128 471 616  
P.O. Box 1053, BENDIGO, VICTORIA, 3552



Benalla Show 2017



Enquiries regarding Stock or Semen  
Sales Welcome.

Farm visit and Inspection of cattle always welcome

## Brian & Karen Morham

528 Bostock Road  
Lurg Victoria 3673  
PH: (03)57666192

Mob: 0418584149 (BM)  
Mob: 0408584149 (KM)

Email: [morhammaines@bigpond.com](mailto:morhammaines@bigpond.com)  
Facebook: Morham Maine's